

Cellcore in use on both sides of the new Tyne Tunnel

Cellcore, Cordek's solution to ground movement problems, is providing heave protection on both sides of the new Tyne Tunnel. While different construction teams are responsible for each side of the work, the engineers involved with the project, **HPR Consultants** and **AECOM**, independently selected Cellcore.



A heavy duty grade was needed because the concrete slab is 1.2m deep and is heavily reinforced. The safe load was 35kN/m² and the fail load 45kN/m².

Design and build contractor for the £260 million project is **Bouygues Travaux Publics**, and the new Tunnel is scheduled for completion in 2010. During the coming winter, four 90 metre long precast

reinforced concrete tube segments, being built at Wallsend dry dock, will be towed and sunk into position on the river bed to form the tunnel that will link the two sides.

Once the new Tyne Tunnel is open, work will start on refurbishing the existing tunnel so that by the end of 2011 both will be fully operational.



A GRAND DESIGN

Cordek supplied the soffit formwork for this spiral staircase, at 42 Withdean Road, Brighton, which featured in the TV programme 'Grand Designs' earlier this year.



Seasons Greetings to all our readers

Cordek will be donating £2,000 to Chestnut Tree House Children's Hospice, rather than sending Christmas cards this year.

THE COMPLETE SOLUTION

Cordek has supplied a full range of gas protection products to the site of a new supermarket at St Peter's Wharf, in Maidstone, where



G & H Construction Limited is the main contractor. The sub-contractor **Daleraven Limited** is laying 1800m² of Cordek's Ventform 80/30 together with their MB420 gas membrane, to form a passive gas venting solution.



Slag gives rise to 'heave' fears

Cordek have supplied Cellcore to protect the beams from ground movement at a new Tesco Express in Consett, Tyne and Wear. Originally the site of a colliery, the residual slag was predicted to heave.



The main contractor for the project was **The Clegg Group**, the architects **West & Machell** and the engineers **ARP Associates**.

A Little Light Relief!

The renovation of public Toilets in West Campbell Street, Glasgow involved complete replacement of the floor without affecting the existing structure. With only limited site access the contractor, **MG Wood**, found that Cordek's Filcor 45 EPS was a cost effective and easy to handle fill material for constructing the new floor.

With the project now complete, relief will be in hand for years to come!!



HARNESSING THE FORCES OF NATURE

Constantly in the news, for one reason or another, Windfarms are an increasingly used source of renewable energy.

While the individual turbines are imposing structures, the size of the foundations, as can be seen from our pictures, may come as a surprise.

The project we're featuring is an 8 unit Windfarm, situated above the Carron and Forth valleys in Scotland, for which Cordek supplied

heavy duty formwork to create the circular foundations. Measuring 18 metres in diameter and 1.5 metres deep, each requires some 400m³ of concrete.

The contractor for the project is **R J McLeod**.



THREE IN ONE FOR CORDEK



Trough Moulds, Filcor and Claymaster.

All three of these Cordek products feature in the construction of a new complex at Embassy Court in Welling, Kent.

A major development that includes a supermarket with car parking below and social housing above.

The engineers for the project, **Marks Heeley & Brothwell**, specified Cordek Trough Moulds to form the in-situ reinforced concrete floors.

Tailormade to the site requirements, in a variety of cross-sections and centres, the moulds were installed by the contractor, **O'Halloran & O'Brien**.

A spokesman for them stated that they were happy with the trough system and pleased with the finish that was achieved. Quite separately, Cordek organised collection of the used moulds for recycling into new expanded polystyrene block.

On the same contract, Filcor EPS was used as a void former and Claymaster provided protection against lateral ground movement.



Cordek Product Literature

For ground movement, gas venting, formwork solutions and more, the relevant product literature can be downloaded at – www.cordek.com

If you would prefer hard copies of these brochures, or a copy of our corporate CD, just call us on 01403 799601, or email to info@cordek.com



Sitting comfortably?

This full size classic style sofa was routed by Cordek from high density expanded polystyrene, for the artwork company **Unusual**.

It will be 'coated' for outdoor use in one of the courtyards at a new Primary Care Centre in Stanley, Durham.



CHAMPAGNE WINNERS



With health and safety somewhat lacking, we asked in which country this picture was taken.

The answer was Colombia! (The city was Bogota)

We had a very large entry - two were outright winners and a draw was held to determine the third. They were:

Rob Claase – Atkins

Damian Green - AECOM

Michael Humphreys – Price & Myers



Paddy Fane of Cordek with Michael Humphreys (right)



Dale Lyon of Cordek with Damian Green (left)



Paddy Fane of Cordek with Rob Claase (right)

Special Protection for 'Special Needs'

Giffords of Birmingham specified the use of Cordek's gas venting system on the site of Tuke School, London SE15, which will cater for children with special needs.



The main contractor, **JJ Coughlan Ltd**, installed 3500m² of Ventform 200/9 and 200/13 and found the system simple and quick to lay.

Your Chance to Win a Magnum of Champagne

Here's an easy one to end the year with!

Just tell us the next number in this progression.

0, 3, 14, 39, 84, 155, ?

Get it right and you could win one of the three magnums of champagne we've got on offer.

Send your entry, together with your name, company and contact details, to:

The Editor, Cordek News, Spring Copse Business Park, Slinfold, West Sussex, RH13 0SZ

OR, by email to: editor@cordek.com

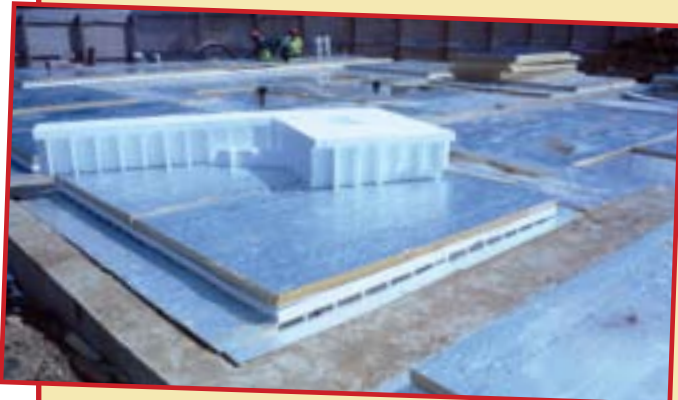
Note: In the event of a tie, all correct entries will be included in a draw to select the three winners.

A More Convenient Way?

If you would like to receive future issues of our newsletter by email, just send your address to editor@cordek.com and quote Cordek News.

CONTRACT UPDATE

- Highly shrinkable clay, on the site of a new children's play area at the Dolphin Centre in Pangbourne, Berkshire, prompted the engineers **O'Brien and Price** to specify the use of Cellcore to protect against ground movement.



The main contractor was **Buckle & Davies** and the Cellcore was laid by **EJC Groundworks**.

- Cordek's Tipform shuttering system, for facing steep sided landfill sites, was specified by the engineers **Sir Frederick Snow & Partners**, to extend two 'cells' at the Avondale Landfill Site in Polmont, Scotland. One is for household waste and the other for hazardous waste. The Tipform system will maximise volume for each 'cell' and enhance profitability of the operation.



- The engineers, **Jacobs**, specified 3700m² of Cellcore on the site of a new campus building at West Kent College in Tonbridge, to alleviate ground movement problems. **Gallagher Contractors Limited** was the main contractor.

