



TIPFORM

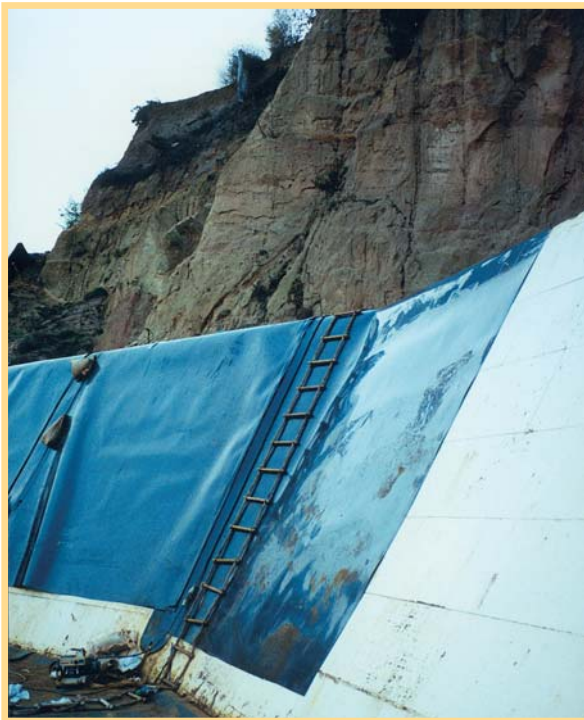
The cost-effective environmental solution to landfill construction

Product Features

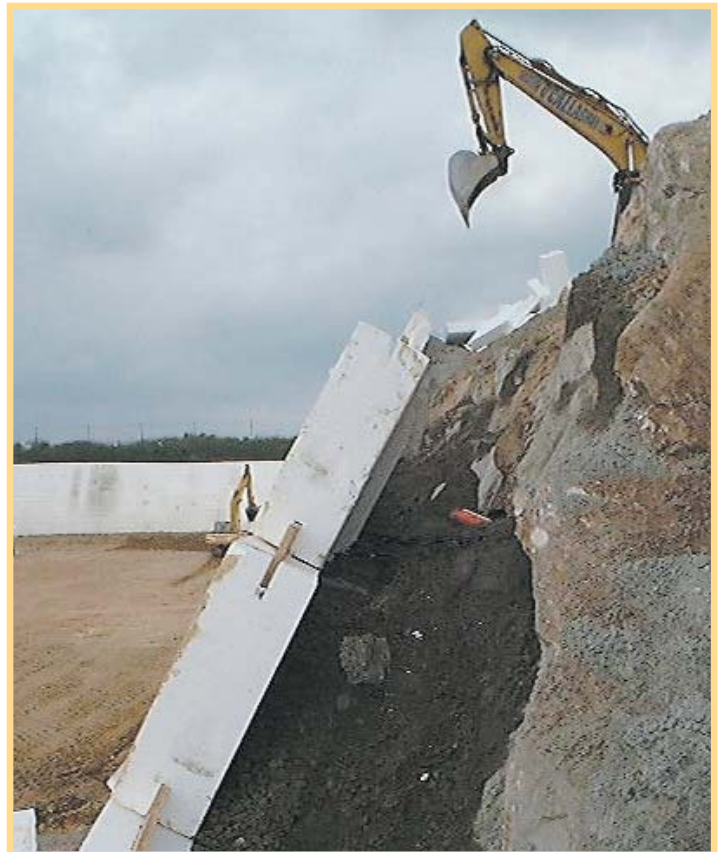
Tipform is Cordek's patented shuttering system for facing steep-sided landfill sites.

An extremely cost-effective solution that enables the rapid formation of steep smooth sides to quarry walls. It's use minimises damage to geosynthetic liners.

Tipform meets the latest landfill directive if used with a suitably designed backfill.



Over the last ten years Tipform has been the chosen solution at an ever-increasing number of landfill sites, throughout England and Ireland.



The benefits are considerable:

- Can be designed to meet current legislation.
- Lightweight, quick and easy to construct.
- Maximises landfill waste volume.
- The ideal base for geomembranes which minimises the risk of damage and leachate contamination of the water courses.
- Reduces the cost of laying the membrane and increases its life expectancy.
- Offers flexibility in slope angle, site geometry and can be tailored to existing schemes.
- Durable and resistant to most chemicals and weak solutions such as leachates.
- Inert, non-biodegradable and CFC free.

Installation

Tipform consists of three main components, each manufactured from high density expanded polystyrene.



Base Units (1.22m x 0.61m deep)

Locate the bottom of the wall and determine angle of slope (70° max.)



Wall Units (1.22m x 0.61m deep)

These standard units are used to construct the wall



Capping Units (1.22m x 0.3m deep)

Re-usable units for capping intermediate lifts and the completed wall

Construction process

Place Base Units in position, over timbers that have been lined, levelled and pinned to the ground. Backfill, compact and incorporate the first layer of geogrid. ▼



Inset 19mm plywood strips in the recesses in the top of the base units and position the first row of Standard Units.

Carry on backfilling behind the Standard Units to approximately half height.



▲ Alignment is maintained using adjustable polypropylene straps, secured to the plywood inserts and anchored to pins driven into the fill.

Continue to backfill, incorporating layers of geogrid. Position and secure Standard Units as before, until the required wall height is attained. Now locate the Capping Units.



▲ Position the geomembrane, weld to the previous layer, position drainage and protection materials as required. Fill with waste.

When the fill completes the first lift, the Capping Units are removed for re-use. Subsequent lifts are

For our detailed literature on these other Cordek Solutions, please call our technical sales on: **+44 (0)1403 799601**

Cellcore

For protecting foundations against ground movement

Claymaster

Low density polystyrene for accommodating lateral ground movement

Cellform

Like Groundform, but with built-in protection against ground movement

Groundform

A formwork system for in-situ ground beams and pile caps

Ventform

For venting hazardous gas from beneath buildings

Correx & Seekure

For temporary protection applications

Formwork Solutions

For archways, columns, staircases, piling and bridges etc

Trough Moulds

For forming ribbed concrete floors

Waffle Moulds

For forming two-way ribbed concrete floors

Piling Accessories

For piling solutions

Cordek Bentonite WM

For below ground waterproofing applications



Cordek offer a full technical advisory service on Tipform, and can also provide a design package in conjunction with the geogrid manufacturers. Site specific details such as angle of slope, mitred corners and lift height can all be varied to suit customer requirements.

For more information please call our Technical Sales Department on 01403 799601

Cordek Limited
Spring Copse Business Park
Slinfold
West Sussex RH13 0SZ
England

Telephone +44 (0)1403 799600
Facsimile +44 (0)1403 791718
e-mail sales@cordek.com

The contents of this brochure are the copyright of Cordek Limited and may not be reproduced without permission. February 2005